



**REGIONAL SPECIALISED METEOROLOGICAL CENTRE-TROPICAL CYCLONES, NEW DELHI  
TROPICAL WEATHER OUTLOOK**

**DEMS-RSMC SPECIAL TROPICAL CYCLONES NEW DELHI DATED 15.07.2022**

**TROPICAL WEATHER OUTLOOK FOR NORTH INDIAN OCEAN (THE BAY OF BENGAL AND ARABIAN SEA) VALID FOR NEXT 120 HOURS ISSUED AT 0600 UTC OF 15.07.2022 BASED ON 0300 UTC OF 15.07.2022.**

**BAY OF BENGAL:**

YESTERDAY'S LOW PRESSURE AREA OVER NORTH ODISHA & NEIGHBOURHOOD NOW LIES OVER COASTAL ODISHA & NEIGHBOURHOOD AT 0300 UTC OF TODAY, THE 15TH JULY, 2022. IN ASSOCIATION WITH THIS SYSTEM SCATTERED LOW AND MEDIUM CLOUDS WITH EMBEDDED MODERATE TO INTENSE CONVECTION LAY OVER NORTH ODISHA & NEIGHBOURHOOD. MINIMUM CLOUD TOP TEMPERATURE IS MINUS 70 DEG C.

SCATTERED LOW AND MEDIUM CLOUDS WITH EMBEDDED INTENSE TO VERY INTENSE CONVECTION LAY OVER CENTRAL BAY OF BENGAL, NORTH ANDAMAN SEA AND MODERATE TO INTENSE CONVECTION LAY OVER REST OF BAY OF BENGAL AND SOUTH ANDAMAN SEA.

**PROBABILITY OF CYCLOGENESIS (FORMATION OF DEPRESSION) DURING NEXT 120 HRS:**

24 HOURS	24-48 HOURS	48-72 HOURS	72-96 HOURS	96-120 HOURS
NIL	NIL	NIL	NIL	NIL

**ARABIAN SEA:**

UNDER THE INFLUENCE OF A CYCLONIC CIRCULATION OVER NORTHEAST ARABIAN SEA & ADJOINING COASTAL AREAS OF GUJARAT, A LOW PRESSURE AREA FORMED OVER THE SAME REGION AT 0000 UTC AND IT LAY AS A WELL MARKED LOW PRESSURE AREA OVER NORTHEAST ARABIAN SEA AND ADJOINING COASTAL AREAS OF SAURASHTRA & KUTCH AT 0300 UTC OF TODAY, THE 15TH JULY, 2022. IT IS LIKELY TO MOVE GRADUALLY WESTWARDS AND CONCENTRATE INTO A DEPRESSION DURING NEXT 24 HOURS. IN ASSOCIATION WITH THIS SYSTEM SCATTERED TO BROKEN LOW AND MEDIUM CLOUDS WITH EMBEDDED INTENSE TO VERY INTENSE CONVECTION LAY OVER NORTHEAST ARABIAN SEA OFF WEST GUJARAT COAST & NEIGHBOURHOOD. MINIMUM CLOUD TOP TEMPERATURE IS MINUS 93 DEG C.

SCATTERED TO BROKEN LOW AND MEDIUM CLOUDS WITH EMBEDDED INTENSE TO VERY INTENSE CONVECTION LAY OVER NORTH AND ADJOINING CENTRAL ARABIAN SEA. MINIMUM CLOUD TOP TEMPERATURE IS MINUS 93 DEG C. SCATTERED LOW AND MEDIUM CLOUDS WITH EMBEDDED MODERATE TO INTENSE CONVECTION LAY OVER REST PARTS OF CENTRAL & SOUTHEAST ARABIAN SEA.

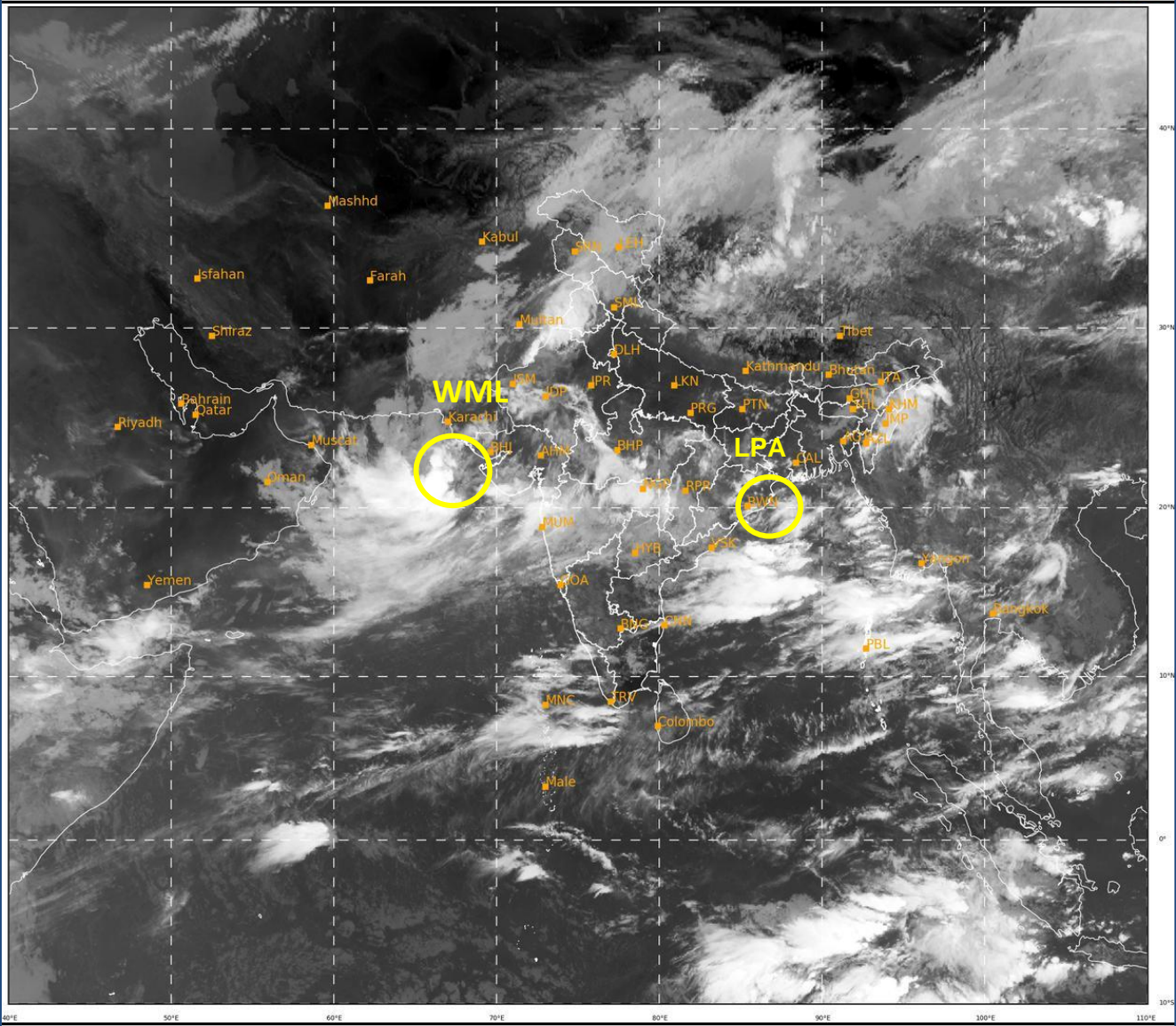
**PROBABILITY OF CYCLOGENESIS (FORMATION OF DEPRESSION) DURING NEXT 120 HRS:**

24 HOURS	24-48 HOURS	48-72 HOURS	72-96 HOURS	96-120 HOURS
MOD	HIGH	HIGH	NIL	NIL

**REMARKS:** NIL

SAT : INSAT-3D IMG  
IMG\_TIR1 10.8 um  
LIC Mercator

15-07-2022/(0330 to 0356) GMT  
15-07-2022/(0900 to 0926) IST



347

935

IMD, DELHI

**LPA: LOW PRESSURE AREA**  
**WML: WELL MARKED LOW PRESSURE AREA**

Cloud distribution: (a) Isolated: <25%, Scattered:25-50%, Broken: 51-75%, Solid:>75%, Convection Intensity: (a) Weak: Cloud Top Temperature (CTT) >-25°C, (b) Moderate: CTT: - 25°C to -40°C, (c) Intense: CTT: - 41°C to -70°C and (d) Very Intense: : Less than -70°C  
PROBABILITY OF CYCLOGENESIS (FORMATION OF DEPRESSION): NIL: 0%, LOW: 1-33%, MODERATE: 34-66% AND HIGH: 67-100%  
This is a guidance Bulletin for WMO/ESCAP Panel Member countries. Visit respective National websites for Country specific Bulletins